



# TELECOM WEEB® WASHER

Equipment Rack Bonding & Grounding



The WILEY Telecom WEEB® Washer is an innovative design which utilizes patented WEEB® Washer teeth that eliminate the need to remove nonconductive coatings (e.g. paint and powder coat) when making a bonding connection. The WEEB® teeth pierce through most nonconductive coatings and embed into the underlying metal thus creating a bonding connection between the lug and the coated metal component that it is installed on (e.g. equipment racks, cabinets, enclosures, cable tray, etc.). Not having to remove nonconductive coatings will save on installation time, create a cleaner work environment and most importantly, prevent improper coating removal techniques that can lead to poor connections.

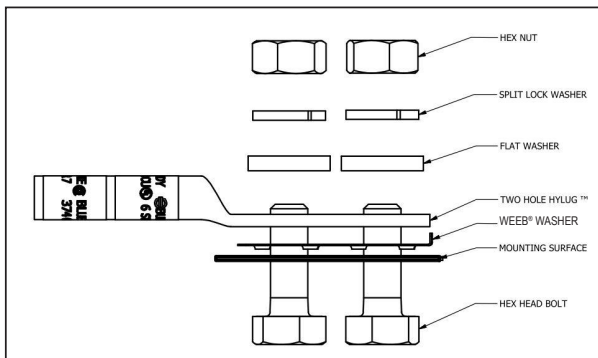
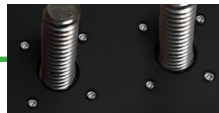


Figure 1: Mounting Requirements

- The WEEB® Washer is made from corrosion resistant 304 stainless steel which provides outstanding durability and performance
- Creates a connection between the lug and underlying metal in various applications (e.g. equipment racks, cabinets, servers, enclosures, cable trays, etc)
- For use with 2-Hole HYLUG™ or equivalent connector
- Wire Range: #14 - #2AWG
- Eliminates the need for surface preparation and oxide inhibitor - WEEB® Washer teeth pierce through most nonconductive coatings and embed into metal underneath (e.g. paint and powder coat)
- Proven technology, outstanding quality, engineered solution
- Detailed manual specifying proper hardware, torque and mounting information available upon request
- UL 467 Recognized for grounding and bonding equipment
- Custom grounding and bonding solutions available upon request

WEEB® Washer teeth embedment in nonconductive coating.



Catalog #	WEEB® Washer					STAINLESS STEEL HARDWARE KITS (TMH-SS) - SOLD SEPARATELY*								INSTALLATION TOOLING - SOLD SEPARATELY*				
	Compatible TWO HOLE HYLUG™	Conductor		Hex Head Bolt		Stud Hole Spacing (Center to Center)	Catalog #	Bolt			Flat Washer	Spilt Washer	Hex Nut		Working Range	Installation Torque (in-lbs)		
		Wire Type	Wire Range	Size	Torque (in-lbs)			Size	Length	Qty								
WEEB-2TC14	YA-2TC14	Code	#14-2 AWG	1/4"	100	5/8"	TMH262SS	1/4-20"	2	4	2	2	0.09-0.34	100	BTW30150			
	YA-L-2TC14						1.00						0.34-0.59					
	YAZ-2TC14						1.25						0.59-0.84					
	YAZV-2TC14						1.50						0.84-1.09					
	YGA-2TC14	Flex	#8-2 AWG	3/8"	240	1"	TMH264SS		3/8-16"	2	4	2	2			0.19-0.44	240	BTW150750
	YA-L-2TC14-FX						1.25									0.44-0.69		
	YAV-L-2TC14-FX						1.50									0.69-0.94		
	YAZ-2TC14-FX						1.75									0.94-1.19		
YAZV-2TC14-FX	2.00	1.19-1.44																

\*TMH-SS KITS & TOOLING ARE SOLD SEPARATELY AND ARE NOT INCLUDED WITH THE WEEB® WASHER

Customer Service 1-800-346-4175

International 603-647-5299

Canada 1-800-387-6487

www.burndy.com



Connecting Power to Your World®

